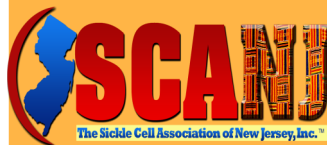


Sickle cell disease is an inherited blood disorder. People with sickle cell disease have red blood cells that become hard which can cause anemia, pain and many other serious health problems. Your involvement makes the difference in overcoming this disease.



Calendar Listings: March

3rd Blue Skies and Brickwork 10th Annual Health Policy Summit. Newseum, Washington DC (SCANJ attending)

3-5th NYMAC Advisory Council Meeting Baltimore, MD (SCANJ attending)

February 28-April 4 Take Control of Your Health CDSMP 6 Week Community Workshop 10:00am-12:30pm Alpha Baptist Church Willingboro Enrollment closed

21-April 25 Take Control of Your Health CDSMP 6 Week Community Workshop 10:00am SCANJ in partnership with the Independent Club of Colonia.

23, 24, 25 & 27th Chronic Disease Self Management Program (CDSMP) 4 Day Peer Leader Certification Class. 10:00AM to 4:30 PM Spain Center (Shiloh Baptist Church) 99 Davenport Ave. in Newark

We encourage you to register early via www.sicklecellnewjersey.org on the events page or via www.eventbrite.com



SCANJ is the
New Jersey Chapter of the



Sickle Cell Disease Association
of America



Volume 6
Issue 3

Say It Loud!

March 2015

Sickle Cell News You Can Use

The Sickle Cell Association of New Jersey
P.O. Box 9501 Newark, NJ 07104

Women's History Month Celebrating Iconic Women-Herstory



Mary Bentley LaMar
Founder
Executive Director

On the first day of March I was in the company of the Griffin Family and friends. Mrs. Julie Griffin had recently lost her son, Sajade R. Griffin, to sickle cell disease and she wanted to do something meaningful to honor his life. So here we were at the memorial for Sajade. Loved ones gathered to remember him. Stories were shared, pictures were shown and prayers were offered.

Prior to the memorial, Mrs. Griffin and I spoke at length about what might be a fitting tribute. We talked about the lack of medical providers who treat adults with sickle cell disease.

And as we talked it became clear that perhaps a lasting legacy to honor Sajade would be to support medical students who have a commitment to treat adults with sickle cell disease. And so, as mothers throughout history have done before, we gave birth...to the Sajade R. Griffin Fellowship. Family and friends of Sajade donated to get it started with over \$1,000.00.

We will be sharing more next month about the Sajade R. Griffin Fellowship. His life serves as inspiration for us to work a little harder, love a little deeper and act with his courageous spirit to continue his fight; ultimately conquer sickle cell disease, and make the world a little better because we were here.

This month we are honoring Iconic Women who have made a difference. We thank them... History...

~Mary

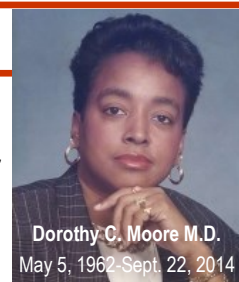
A Woman Who Made A Difference...Herstory

It is an achievement to become a medical doctor. It is even more remarkable when you not only become a medical doctor, but you achieve the distinction of becoming the first African-American female Immunopathologist in New Jersey. And there's more...add to that, being an Associate Professor of Pathology at UMDNJ; Newark, NJ and former Chief Medical Officer of the Sickle Cell Disease Association of America. And she accomplished all of this despite a lifetime of frequent painful crises and hospitalizations as a result of having sickle cell disease.

I'm speaking of Dorothy Carol Moore. She has a story you should know. She received her medical doctorate from University of Medicine and Dentistry New Jersey (UMDNJ). There she received specialty training in immunopathology and blood banking. She was born on May 15, 1962. She played basketball; was a member of Alpha Kappa Alpha Sorority, and enjoyed raising two sons with Dr. Rhonda Hagler, her life partner. Dr. Moore lived a rich and active life until she made her transition on Sept. 22, 2014.-

The life lived by Dr. Moore exemplifies why we celebrate Women's History. She was passionate in her work to achieve quality healthcare for all sickle cell patients and worked tirelessly to promote wellness. Dr. Moore received numerous awards, including the Sickle Cell Education and Service Foundation Community Service Award; The Foster F. Burnett Sr. MD Memorial Award and the SMDP Appreciation Award. Her hope was to one day find a cure for sickle cell disease. And she acted on that hope by making a difference with her life's work.

This Women's History Month we are pleased to partner with the SCDAA and Fendi to honor Dr. Moore and other remarkable women with the Iconic Woman Award



The New Jersey Iconic Women Honorees are:

Dr. Dorothy C. Moore (Posthumous award)

Dr. Rafat Ahmed, Pediatric Hematologist/Oncologist and Assistant Professor of Pediatrics at Cooper University Health Care; Camden, NJ

Dr. Alice Cohen, Program Director, Hematology/Oncology, Director, Frederick B. Cohen Comprehensive Cancer & Blood Disorders Center at Newark Beth Israel Barnabas Health; Newark, NJ

Mrs. Lois McGuire, (Corporate Honoree)--Owner MGM Food Services/McDonalds; Jersey City, NJ

Dr. Jill Menell, Division Chief of Pediatric Hematology Oncology at St. Joseph's Hospital; Paterson, NJ

To celebrate Women's History Month, the SCDAA in cooperation with the Fendi 3baguette Charity Project, has launched a special website, for this month only, to honor our New Jersey Iconic Women and others throughout the country who have done outstanding work for the sickle cell community visit www.iconicwomen.myevent.com

WWW.SICKLECELLNEWJERSEY.ORG



The Sickle Cell Association of New Jersey

Mail Address P.O. Box 9501 Newark NJ 07104

EIN# 80-0474935 SCANJ is a 501c 3 agency

Phone: 973 482-9070 Fax: 973 485-6591

email: info@sicklecellnewjersey.org

FENDI and the SCDAA invite you to a cocktail reception to benefit the SCANJ.

On Saturday March 7th-- Fifteen percent of store sales after 5:30pm will be donated to the SCANJ.

Short Hills Mall

RSVP Only



The Say It Loud Newsletter is published monthly except for July and August. Archived copies are available for download from our website.

Beverly Lucas-Editor

Tax deductible donations accepted by mail and via
www.sicklecellnewjersey.org

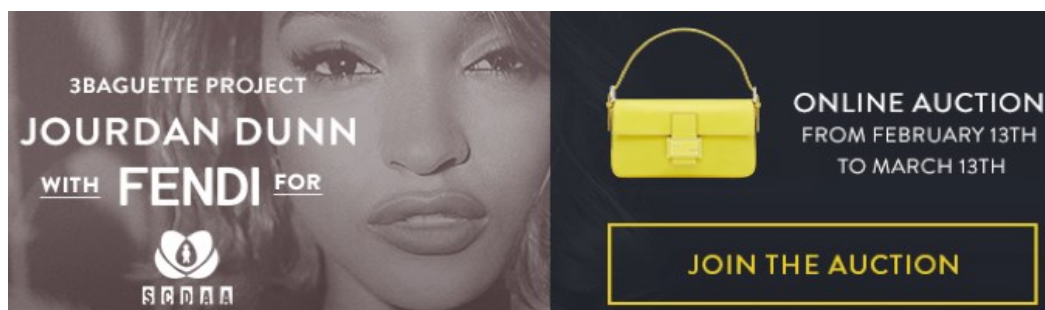


New Jersey's Iconic Women Honorees: Dr. Jill Menell, Dr. Alice Cohen, Dr. Rafat Ahmed, Mrs. Lois McGuire and Dr. Dorothy C. Moore



As part of the Fendi 3Baguette charity project, SCANJ will honor our five iconic women in New Jersey who have made a difference in sickle cell disease with a special *Iconic Woman Reception* on Saturday March 7th from 5:30 pm-8:00pm at the Fendi Store Short Hills Mall in Short Hills, New Jersey. Fendi presents the 3Baguette charity project in collaboration with five iconic women; musician Rihanna, artist Rachel Feinstein, actress Sarah Jessica Parker, **Supermodel Jourdan Dunn** and blogger Leandra Medine. They have been invited by Fendi to personalize their own 3Baguette bag, allowing for a completely unique and fully interpreted creation that will be auctioned to benefit five charities of their choosing. The online auction began February 13th and ends March 13th, 2015. **Proceeds from Dunn's 3Baguette will benefit The Sickle Cell Disease Association of America (SCDAA) and local SCDAA chapters including the SCANJ.**

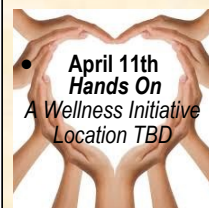
At the reception guests will join in honoring our New Jersey Iconic women and learn more about the mission of the SCANJ. Guests will also have time to browse, shop and place auction bids. Fifteen per cent of the evening's sales will be donated to the Sickle Cell Association of New Jersey. **To RSVP or for more information about the reception, please contact Mary at 973 482-9070 or email us at sicklecellanj@gmail.com. Please note, the reception is open to registered guests only.**



Coming Soon...

April Minority Health Month

- 6th
The 20th Annual NJ Public Health Symposium Robert Woods Johnson Medical School 4:00pm-7:30pm 675 Hoes Lane West in Piscataway (SCANJ participates on a panel)



- 15th
SCDAA National Advocacy Day Washington DC
- June 20
Sickle Cellabration Commemorating World Sickle Cell Disease Day
- August 29
SCDAA National Walk-Baltimore, MD
- September 22-26th
SCDAA Convention Baltimore, MD